

Chapter

21

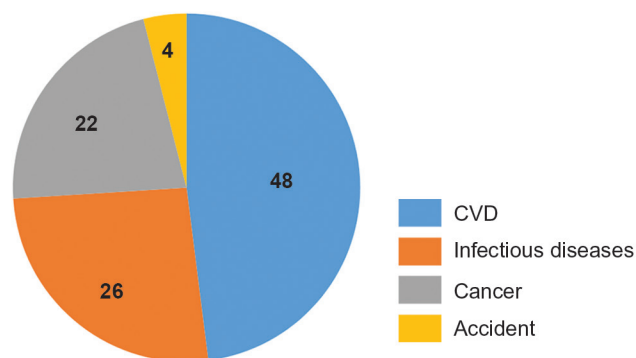
# Data and its Presentation

Competency		Suggested teaching	Suggested assessment
CM6.2	Describe and discuss the principles and demonstrate the methods of collection, classification, analysis, interpretation and presentation of statistical data	Lecture, small group discussion, DOAP sessions	Written/viva voce/skill assessment
CM6.3	Describe, discuss and demonstrate the application of elementary statistical methods including test of significance in various study designs	Lecture, small group discussion, DOAP sessions	Written/viva voce/skill assessment
CM7.4	Define, calculate and interpret morbidity and mortality indicators based on given set of data	Small group, DOAP sessions	Written/skill assessment

1. Draw the appropriate chart for presenting the causes of worldwide deaths in following table:

S.No.	Disease	Proportion (%)
1.	CVD	48
2.	Infectious diseases	26
3.	Cancer	22
4.	Accident	04

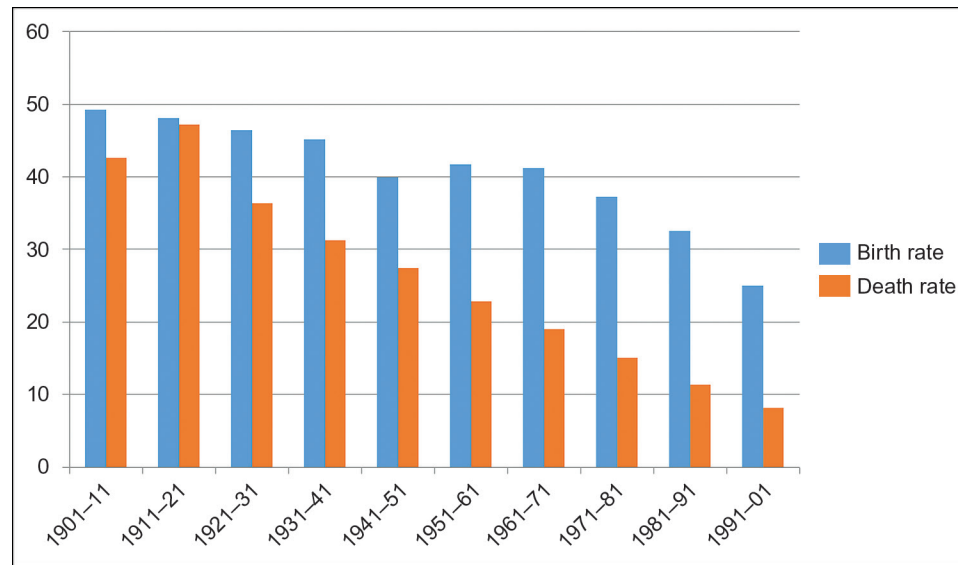
Ans. Pie chart



2. Draw the appropriate chart for decade-wise birth and death rates in India.

Decade	1901-11	11-21	21-31	31-41	41-51	51-61	61-71	71-81	81-91	91-01
Birth rate	49.2	48.1	46.4	45.2	39.9	41.7	41.2	37.2	32.5	25.0
Death rate	42.6	47.2	36.3	31.2	27.4	22.8	19.0	15.0	11.4	8.1

Ans. Multiple bar chart



3. Draw the appropriate chart for showing the correlation between systolic BP and salt intake from following data:

Salt intake	3.5	5.2	6.9	7.2	8.8
Systolic BP	120	130	140	150	160

Ans. Scatter diagram

